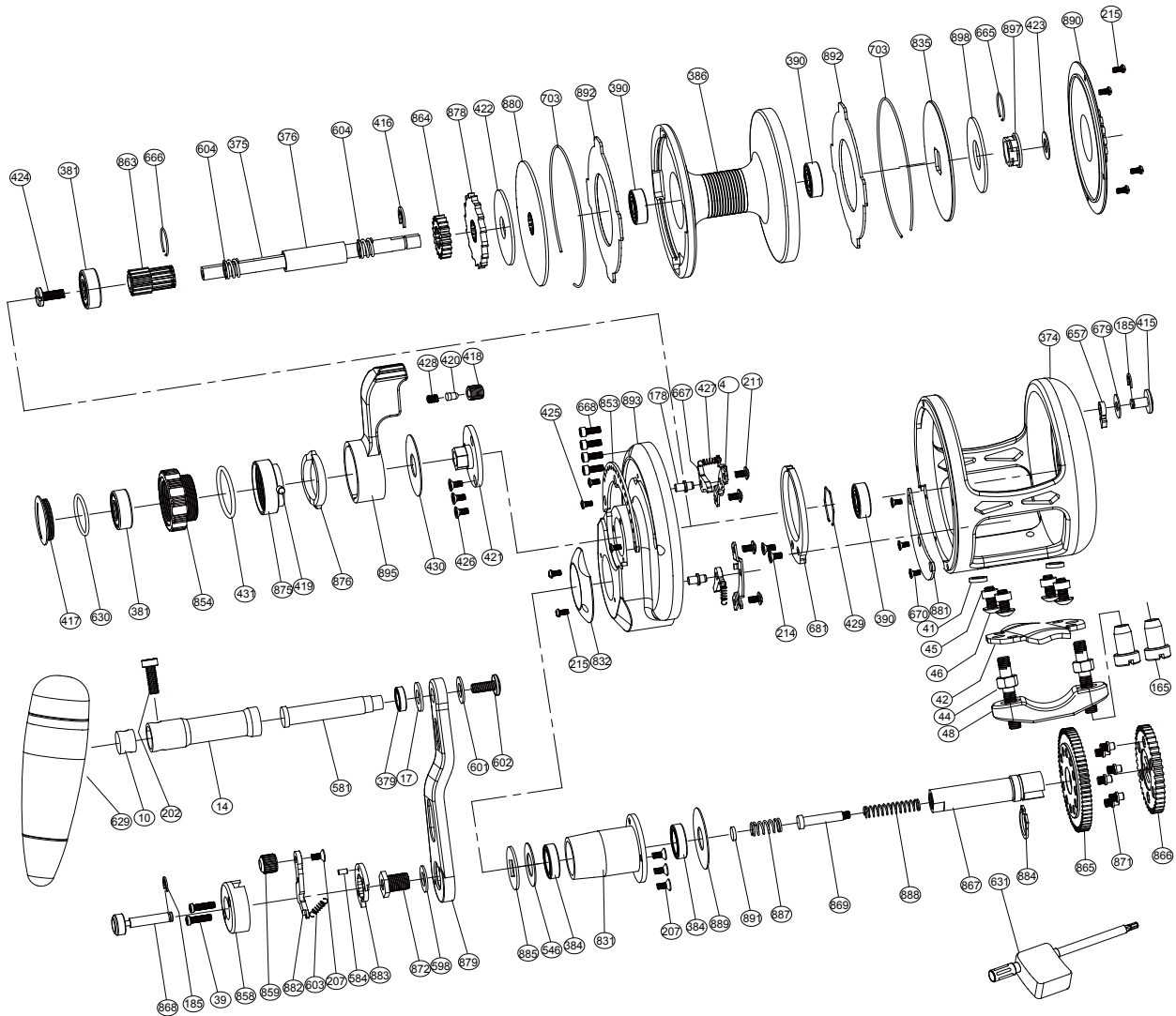


Sealion Series Lefty Dual Drag Jigging Reel

SL09DL



No.	PARTS NAME	No.	PARTS NAME	No.	PARTS NAME
4	Set plate	422	Spool spring washer	854	Drag tension knob
10	Handle shaft retainer	423	Drag plate washer	858	Button basemnt
14	Handle shaft coat	424	Spool shaft screw	859	Button lever knob
17	Washer 2	425	Screw embedded clip	863	High speed pinion gear
39	Button screw	426	Screw for bearing cover	864	Low speed pinion gear
41	Reel foot cannulation 1	427	Stopping stock spring	865	Drive gear-high speed
42	Reel foot	428	Sound nail spring	866	Drive gear-low speed
44	Fixed screws	429	Bearing ring	867	Drive shaft
45	Reel foot cannulation 2	430	Drag control lever washer	868	Push button shaft
46	Reel foot screws	431	"O" ring	869	Slide pole
48	Rod clamp	546	Drive shaft washer	871	Variable-speed pin
165	Fixed nuts	581	T handle nail	872	Handle bolt
178	Set plate nail	584	Push nail	875	Pre-program key
185	"E" washer	598	Handle bolt washer	876	Pre-program plate
202	Handle knob screw 1	601	Washer 3	878	Anti-reverse ratchet
207	Push slice screw	602	Handle knob screw 2	879	Handle arm
211	Set plate screws	603	Push spring	880	Front drag plate
214	Alert ratchet screws	604	Spool shaft spring	881	Close cover
215	Cover screw	629	Handle knob	882	Push slice
374	Frame	630	"O" ring	883	Stopping slice
375	Spool shaft	631	Wrench	884	"C" washer
376	Spool cannulation	657	Alarm sound gear	885	Handle washer
379	Ball bearing (S117)	665	Big ring	887	Drive shaft spring
381	Ball bearing (S606)	666	Small ring	888	Shaft insert spring
384	Ball bearing (S6700)	667	Anti-reverse dog	889	Drive shaft coat washer
386	Spool	668	Side plate screws	890	Cover
390	Ball bearing (S696)	670	Close cover screws	891	Variable-speed washer
415	Strike alert lever	679	Washer 1	892	Drag plate
416	"E" washer	681	Alert ratchet	893	Right plate
417	Drag knob cover	703	Spool ring	895	Drag control lever
418	Sound coat	831	Drive shaft coat	897	Drag plate undersleeve
419	Pre-program key pin	832	Drive shield	898	Spool spring washer
420	Sound nail	835	Rear drag plate		
421	Bearing cover	853	Embedded clip		