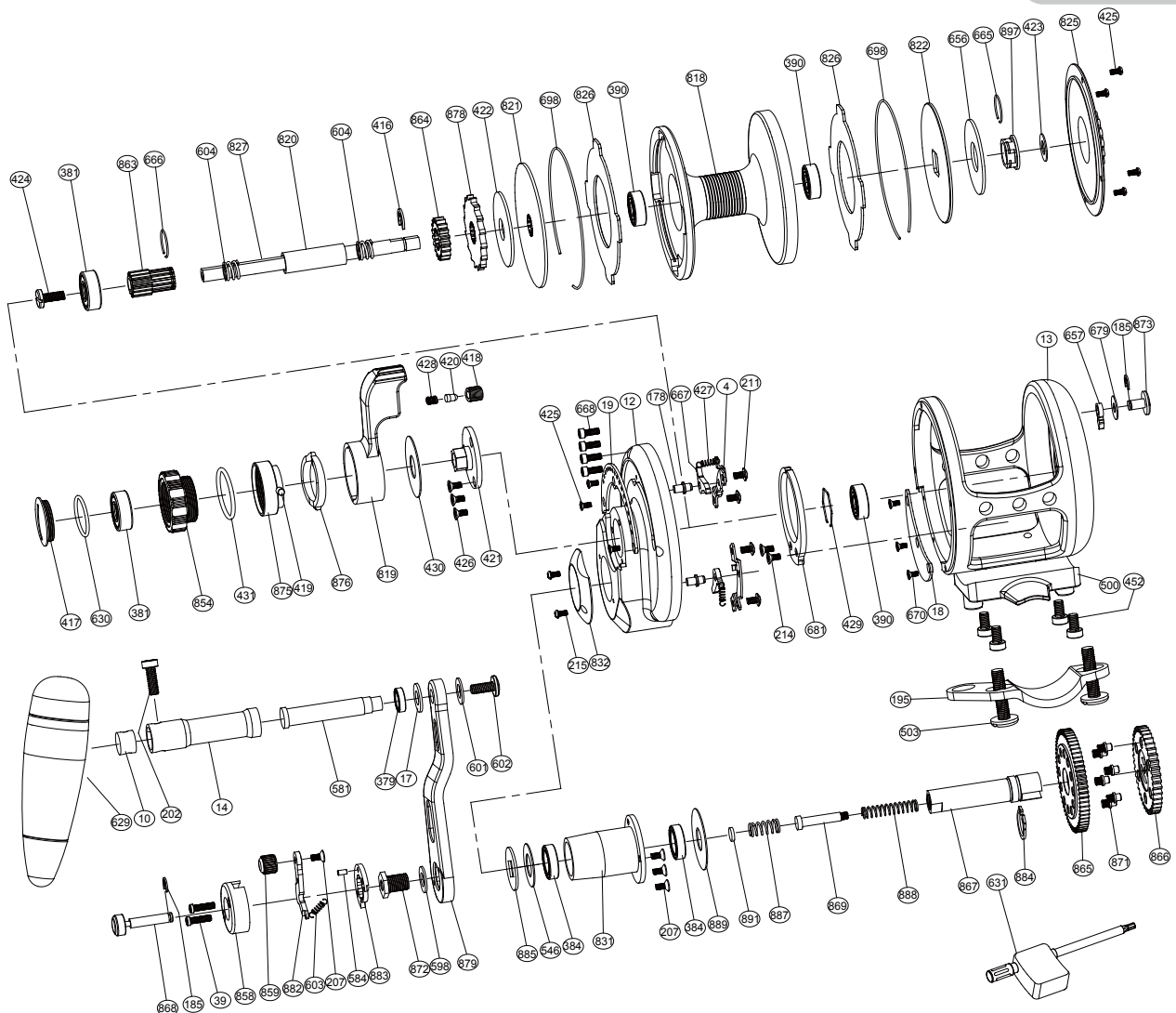


Sealion Series Lefty Dual Drag Jigging Reel

SL08DL



No.	PARTS NAME	No.	PARTS NAME	No.	PARTS NAME
4	Set plate	428	Sound nail spring	825	Cover
10	Handle shaft retainer	429	Bearing ring	826	Drag plate
12	Right plate	430	Drag control lever washer	827	Spool shaft
13	Frame	431	"O" ring	831	Drive shaft coat
14	Handle shaft coat	452	Reel foot screws	832	Drive shield
17	Washer 2	503	Fixed screws	854	Drag tension knob
18	Close cover	500	Reel foot	858	Button basement
19	Embedded clip	546	Drive shaft washer	859	Button lever knob
39	Button screw	581	T handle nail	863	High speed pinion gear
178	Set plate nail	584	Push nail	864	Low speed pinion gear
185	"E" washer	598	Handle bolt washer	865	Drive gear-high speed
195	Rod clamp	601	Washer 3	866	Drive gear-low speed
202	Handle knob screw 1	602	Handle knob screw 2	867	Drive shaft
207	Push slice screw	603	Push spring	868	Push button shaft
211	Set plate screws	604	Spool shaft spring	869	Slide pole
214	Alert ratchet screws	629	Handle knob	871	Variable-speed pin
215	Cover screw	630	"O" ring	872	Handle bolt
379	Ball bearing (S117)	631	Wrench	873	Strike alert lever
381	Ball bearing (S606)	656	Spool spring washer	875	Pre-program key
384	Ball bearing (S6700)	657	Alarm sound gear	876	Pre-program plate
390	Ball bearing (S696)	665	Big ring	878	Anti-reverse ratchet
416	"E" washer	666	Small ring	879	Handle arm
417	Drag knob cover	667	Anti-reverse dog	882	Push slice
418	Sound coat	668	Side plate screws	883	Stopping slice
419	Pre-program key pin	670	Close cover screws	884	"C" washer
420	Sound nail	679	Washer 1	885	Handle washer
421	Bearing cover	681	Alert ratchet	887	Drive shaft spring
422	Spool spring washer	698	Spool ring	888	Shaft insert spring
423	Drag plate washer	818	Spool	889	Drive shaft coat washer
424	Spool shaft screw	819	Drag control lever	891	Variable-speed washer
425	Screw embedded clip	820	Spool cannulation	897	Drag plate undersleeve
426	Screw for bearing cover	821	Front drag plate		
427	Stopping stock spring	822	Rear drag plate		