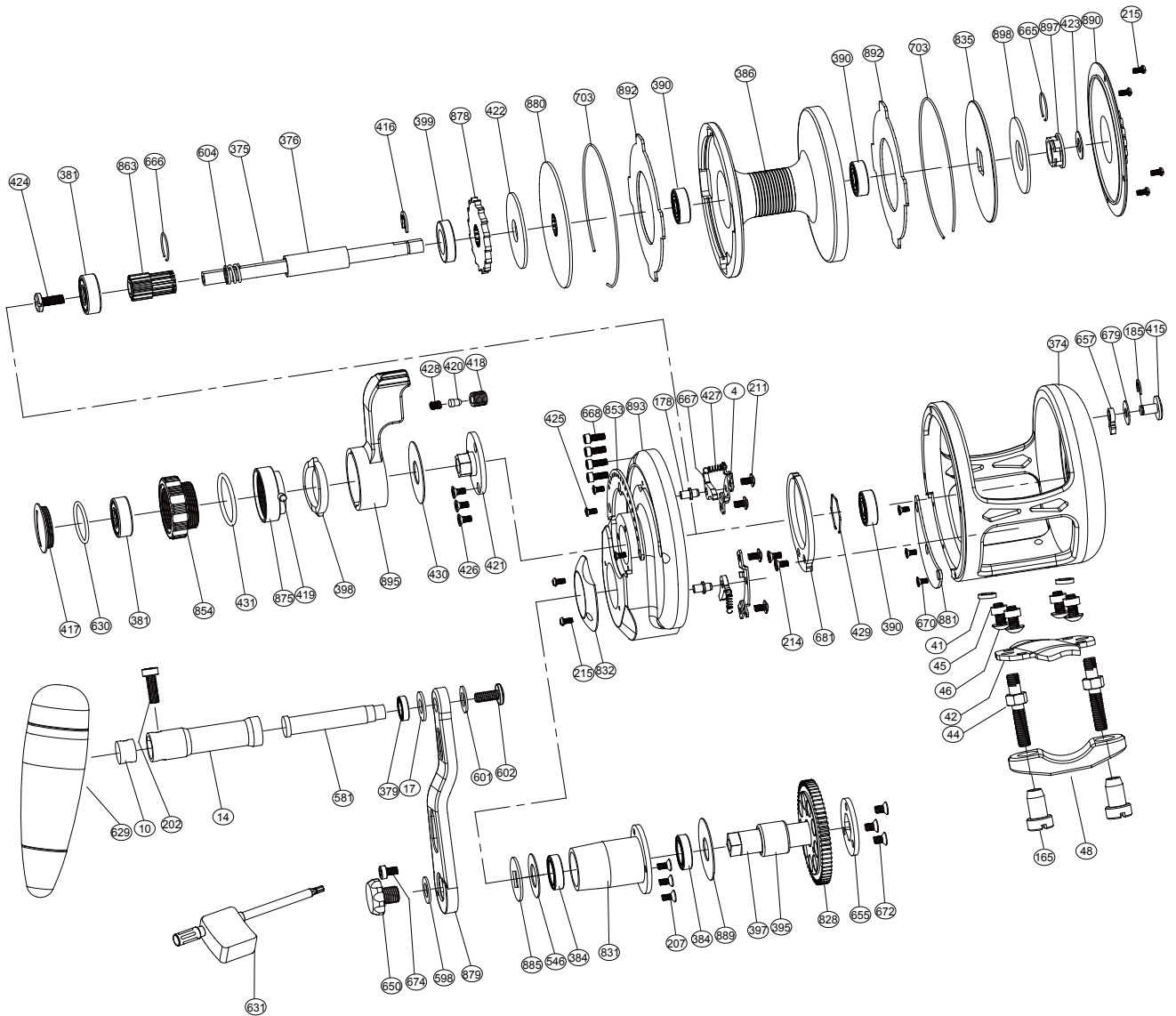


Sealion Series Lefty Dual Drag Jigging Reel

OSL09DL



| No. | PARTS NAME | No. | PARTS NAME | No. | PARTS NAME |
|-----|-------------------------|-----|---------------------------|-----|-------------------------|
| 4 | Set plate | 415 | Strike alert lever | 666 | Small ring |
| 10 | Handle shaft retainer | 416 | "E" washer | 667 | Anti-reverse dog |
| 14 | Handle shaft coat | 417 | Drag knob cover | 668 | Side plate screws |
| 17 | Washer 2 | 418 | Sound coat | 670 | Close cover screws |
| 41 | Reel foot cannulation 1 | 419 | Pre-program key pin | 672 | Fixed plate screws |
| 42 | Reel foot | 420 | Sound nail | 674 | Anti-loose screw |
| 44 | Fixed screws | 421 | Bearing cover | 679 | Washer 1 |
| 45 | Reel foot cannulation 2 | 422 | Spool spring washer | 681 | Alert ratchet |
| 46 | Reel foot screws | 423 | Drag plate washer | 703 | Spool ring |
| 48 | Rod clamp | 424 | Spool shaft screw | 828 | Drive gear-high speed |
| 165 | Fixed nuts | 425 | Screw embedded clip | 831 | Drive shaft coat |
| 178 | Set plate nail | 426 | Screw for bearing cover | 832 | Drive shield |
| 185 | "E" washer | 427 | Stopping slock spring | 835 | Rear drag plate |
| 202 | Handle knob screw 1 | 428 | Sound nail spring | 853 | Embedded clip |
| 207 | Push slice screw | 429 | Bearing ring | 854 | Drag tension knob |
| 211 | Set plate screws | 430 | Drag control lever washer | 863 | High speed pinion gear |
| 214 | Alert ratchet screws | 431 | "O" ring | 875 | Pre-program key |
| 215 | Cover screw | 546 | Drive shaft washer | 878 | Anti-reverse ratchet |
| 374 | Frame | 581 | T handle nail | 879 | Handle arm |
| 375 | Spool shaft | 598 | Handle bolt washer | 880 | Front drag plate |
| 376 | Spool cannulation | 601 | Washer 3 | 881 | Close cover |
| 379 | Ball bearing (S117) | 602 | Handle knob screw 2 | 885 | Handle washer |
| 381 | Ball bearing (S606) | 604 | Spool shaft spring | 889 | Drive shaft coat washer |
| 384 | Ball bearing (S6700) | 629 | Handle knob | 890 | Cover |
| 386 | Spool | 630 | "O" ring | 892 | Drag plate |
| 390 | Ball bearing (S696) | 631 | Wrench | 893 | Right plate |
| 395 | One-way bearing | 650 | Handle bolt | 895 | Drag control lever |
| 397 | Drive shaft | 655 | Fixed plate | 897 | Drag plate undersleeve |
| 398 | Pre-program plate | 657 | Alarm sound gear | 898 | Spool spring washer |
| 399 | Pinion gear cover | 665 | Big ring | | |