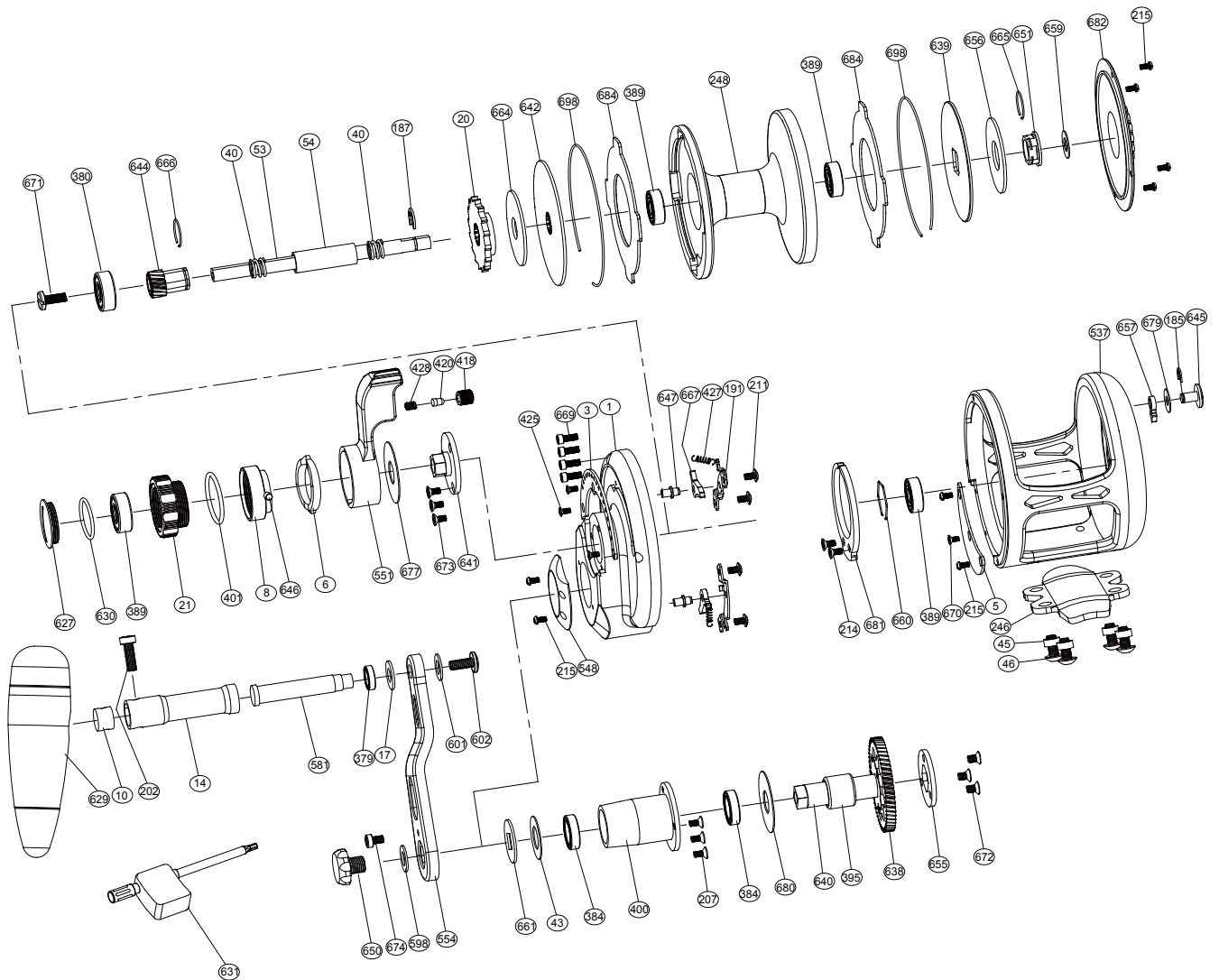


**Sealion Series Lefty Dual Drag Jigging Reel**

**OSL05DL**



No.	PARTS NAME	No.	PARTS NAME	No.	PARTS NAME
1	Right plate	384	Ball bearing (S6700)	645	Strike alert lever
3	Embedded clip	389	Ball bearing (S695)	646	Pre-program key pin
5	Close cover	395	One-way bearing	647	Set plate nail
6	Pre-program plate	400	Drive shaft coat	650	Handle bolt
8	Pre-program key	401	"O" ring	651	Drag plate undersleeve
10	Handle shaft retainer	418	Sound coat	655	Fixed plate
14	Handle shaft coat	420	Sound nail	656	Spool spring washer
17	Washer 2	425	Screw embedded clip	657	Alarm sound gear
20	Anti-reverse ratchet	427	Stopping stop spring	659	Drag plate washer
21	Drag tension knob	428	Sound nail spring	660	Bearing ring
40	Spool shaft spring	537	Frame	661	Handle washer
43	Drive shaft washer	548	Drive shield	664	Spool spring washer
45	Reel foot cannulation	551	Drag control lever	665	Big ring
46	Reel foot screws	554	Handle arm	666	Small ring
53	Spool shaft	581	T handle nail	667	Anti-reverse dog
54	Spool cannulation	598	Handle bolt washer	669	Side plate screws
185	"E" washer	601	Washer 3	670	Close cover screws
187	"E" washer	602	Handle knob screw 2	671	Spool shaft screw
191	Set plate	627	Drag knob cover	672	Fixed plate screws
202	Handle knob screw 1	629	Handle knob	673	Screw for bearing cover
207	Push slice screw	630	"O" ring	674	Anti-loose screw
211	Set plate screws	631	Wrench	677	Drag control lever washer
214	Alert ratchet screws	638	Drive gear-high speed	679	Washer 1
215	Cover screw	639	Rear drag plate	680	Drive shaft coat washer
246	Reel foot	640	Drive shaft	681	Alert ratchet
248	Spool	641	Bearing cover	682	Cover
379	Ball bearing (S117)	642	Front drag plate	684	Drag plate
380	Ball bearing (S605)	644	High speed pinion gear	698	Spool ring